



-2023-

# *Vendor Guide*



Get ready to embark on an epic fiber adventure with the Bluegrass Yarn and Fiber Crawl! Hosted by the Kentucky Fiber Trail July 28th to August 6th. It's the perfect chance to explore and celebrate some of the coolest fiber venues in the area!

The Bluegrass Yarn and Fiber Crawl is all about bringing together wool and fiber producers, artisans, retail locations, and agritourism spots. We're creating a network to showcase their incredible work and connect with fellow fiber enthusiasts.

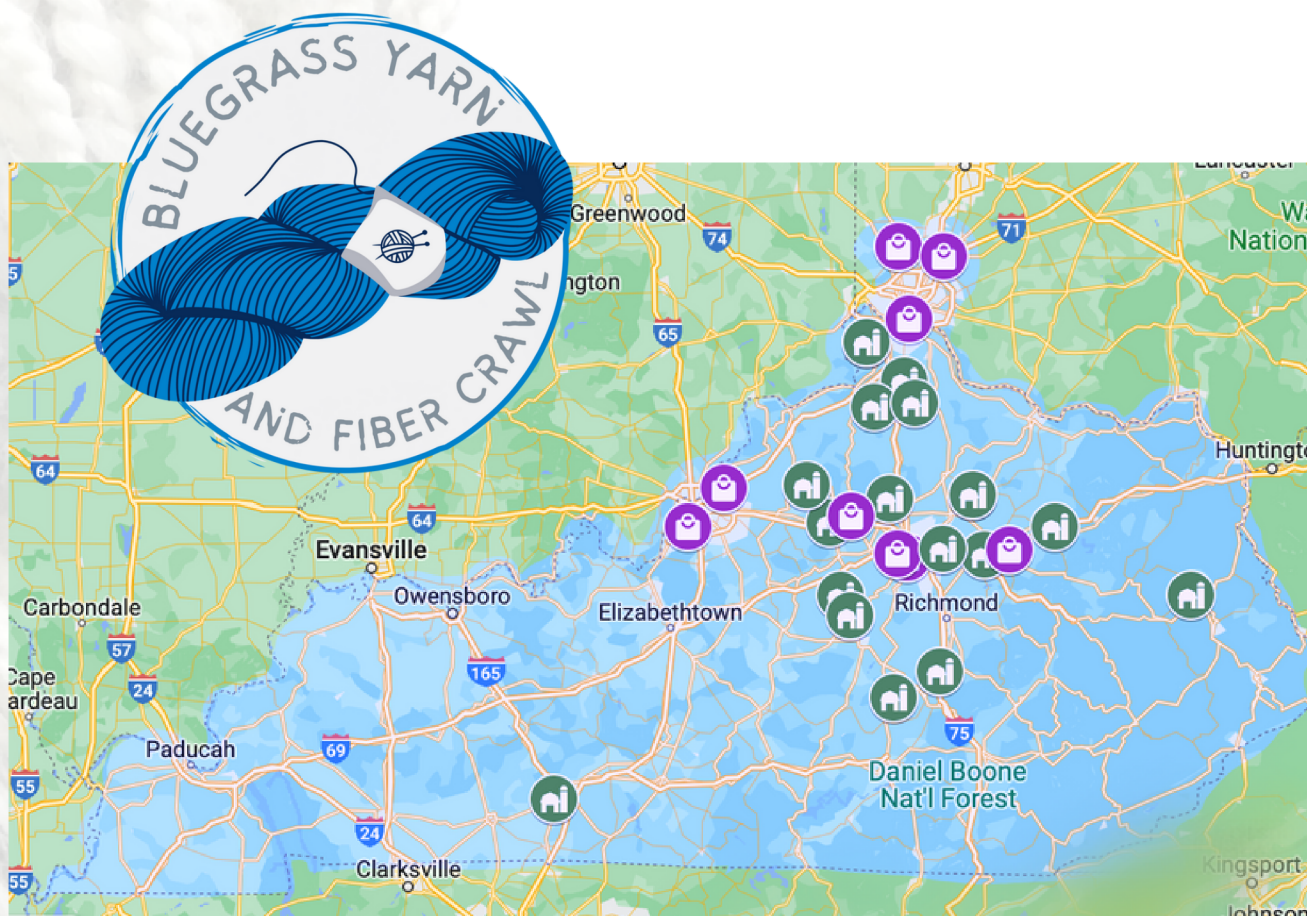
Each location on the trail will have their own hours during the 9-day crawl. So make sure to check out our interactive crawl map to plan your trip accordingly- not all locations will be open every day. You can participate for as many days as you like. There is no cost to participate outside of your personal travel and shopping expenses!

Don't forget to grab your passport- It's your ticket to fun and prizes. Plan your journey, fill out your passport, get it signed and stamped at each stop, and hey, snap some pics along the way. You can even enter our hashtag and photo contests on Facebook and Instagram for a chance to win some fiber prizes!

But the best part of all? You'll get to meet some amazing fiber friends throughout the Bluegrass and, of course, do some awesome shopping! Prepare to be blown away by the talent and creativity of our community. This crawl is going to be a memory-making, treasure-finding, and friendship-building experience you won't want to miss.

Be sure to follow us on Facebook and Instagram and share your crawl with us using the hashtag #BluegrassYarnandFiber2023





### **Covington Area**

2 Pt. Suri Alpacas - Dry Ridge, KY  
 Eagle Bend Yarn Shop- Burlington, KY  
 Free Radical Ranch- Morning View, KY  
 Lambikin's Hideaway- Hamilton, OH  
 Main Street Yarns- Mason, OH  
 Reclaimed Ranch- Williamstown, KY  
 Stitch Yarn Studios- Covington, KY

### **Danville Area**

Black Watch Alpaca- Harrodsburg, KY  
 Merry Go Round Farm- Berea, KY  
 Whispering Birch Farm- Harrodsburg, KY

### **Bowling Green Area**

Alive N' Fuzzy Alpaca Farm- Bowling Green, KY

### **Paintsville Area**

Lavender Springs Alpaca- Oil Springs, KY

### **Frankfort Area**

Edwards WooWorks - Stamping Ground, KY  
 Morgan Farm- Frankfort, KY  
 Sweet Home Spun- Pleasureville, KY  
 The Woolery- Frankfort, KY

### **Lexington Area**

Creative Twist- Mt. Sterling, KY  
 LSH Creations - Lexington, KY  
 Kentucky Wool Works- Paris, KY  
 Rebelle - Lexington, KY  
 Sarabee Designs and Fiber Farm- Winchester, KY  
 Violet Hill Farm- Lexington, KY

### **Morehead Area**

Oak Haven Fiber Farm- Owingsville, KY

### **Louisville Area**

Over the Next Row Knits- Prospect, KY  
 Little Loomhouse- Louisville, KY

# 2 POINT FARM ALPACAS

**6330 Warsaw Rd  
Dry Ridge, KY 41035  
513-218-8978**

**2PointFarmAlpacas.com**

2 Point Farm is focused on raising the rare breed of Suri Alpacas, known for their exquisitely silky fleece. Breeding stock, fiber and pet Suri alpacas for sale. We also offer breeding services from award winning males.

## **Crawl Hours:**

Each day of the crawl  
10-6

Text or call 513 218 8978 if you need to shop outside these hours.



This is a working farm, so for everyone's safety, please do not bring pets on the premises unless you can keep them safely in your vehicle.



# ALIVE N FUZZY ALPACAS

**299 Misty Lane, Bowling  
Green, KY**  
**[alivenfuzzyalpacas.com](http://alivenfuzzyalpacas.com)**



## **Crawl Hours:**

3-5pm Sunday-Friday  
Appointments  
preferred  
606-633-8774

Our farm has easy access less than 10 miles from I65 4 Lane road except for the last mile. The 26 alpacas are people friendly with many ready to go on a walk with you. Enjoy spending time experiencing the alpaca lifestyles get acquainted with the crias (this springs babies) there will be numerous selfies. If you need information about alpaca farming on your own we are excited to share what we have learned over many years in the industry

## **ALIVE N' FUZZY ALPACA FARM**



# BLACK WATCH ALPACAS/ LITTLE SHOPPE ON THE FARM

1291 Talmage Mayo Road  
(Route 1160)

Harrodsburg, KY 40330  
859 734 0222

**[blackwatchalpacas.com](http://blackwatchalpacas.com)**

Come and visit! From individuals to small groups, you'll walk among alpacas – not just watch them from a distance or from behind a fence. Some are friendly enough to pet and love on. You'll learn about the animals and questions are always welcomed. Take pictures, selfies, videos or just enjoy. IT'S FREE! And visitors get a FREE finger puppet to take home. Then, when you're finished with the critters, browse the Little Shoppe on the Farm where you'll find socks, gloves, hat, scarfs, stuffed animals, and other hidden gems – almost all made from alpaca. And we have alpaca yarn in various colors and weights from our own herd. We also have raw fiber right off the alpacas.



## Crawl Hours:

July 28 to August 2  
11 am to 4PM





# CREATIVE TWIST

**31 S Maysville St.  
Mount Sterling ,KY  
40353**

**859-432-8133**

**[creativetwiststudio.com](http://creativetwiststudio.com)**



## **Crawl Hours:**

**Tue-Fri 12-5**

**Friday Aug 4- extra hours  
6-9**

**Sat 11-4**

**Sun 1-4**

Visit Mount Sterling, KY's fiber and craft merchant, Creative Twist (formerly Native Twist). I dye my own yarn, Happy Habit, here in the store and proudly feature local Kentucky crafts.

Follow my Facebook or Instagram for yarn dyed just for the crawl, sales, specials, and prizes! Please stop by to see our beautiful historical building and take a photo with the 13 ft. crocheted tree. There is a wood-fired pizza shop, Tomatoes and Flames, across the street and new coffee shop, the HUB, immediately next door. (Please check their info for open hours.)



**CREATIVE  
TWIST**

*yarn & craft studio*

# EAGLE BEND YARN & FIBER SHOP

**7812 East Bend Rd.  
Burlington, KY 41005  
(859) 750-3560  
[ebyarnandfiber.com](http://ebyarnandfiber.com)**



## **Crawl Hours:**

Monday 11-5  
Tuesday 1-7  
Wednesday thru  
Saturday 10-5,  
Sunday 1-4

Eagle Bend is a National Historic Registry property and home to more than 125 show quality and award winning alpacas.

During the crawl we will have a special project made by Double the Stitches of Jessica Ays from our own alpaca and wool sheep. The pattern can only be purchased here at the shop especially for the crawl.

Free gift for each passport recipient and a handmade project bag by free with \$50 purchase while available.



*Eagle Bend Alpacas*



# EDWARDS WOOLWORKS LLC

**1475 Glass Pike,  
Stamping Ground, KY  
40379**

**502-370-8365**

**edwardswoolworks.com**



## **Crawl Hours:**

Each day of the crawl  
10:00-4



Fair trade milling for all  
502.370.8365

thewoolworksky@gmail.com  
www.edwardswoolworks.com

We will be offering roving and yarn from our mixed flock of Shetland, California Red, Jacob, Cheviot, Corriedale, CVM Romeldale, and from our rescued sheep we will have Cheviot, Babydoll/Lincoln cross, BFL/Merino cross, and a few we frankly have no idea what they are but their yarn is lovely.

Fine art prints, fiber coloring books, and a chance to win \$100.00 worth of yarn from our flock for your next fiber project.





# FREE RADICAL RANCH

**15299 Parkers Grove Rd  
Morning View, KY, 41063  
[freeradicalranch.com](http://freeradicalranch.com)**

We are a working, diversified 54-acre farm in Piner, KY (Morning View Post Office) located just minutes off of I-75 in southern Kenton County in northern Kentucky.

We host Suri and Huacaya alpacas, Angora goats (for mohair), Teeswater sheep (for wool), along with poultry (including a variety of laying hens & ducks (for eggs)).

## Crawl Hours:

Friday, July 28 - 2-8pm

Saturday, July 29 - (only at Schoolyard Winery Farmers Market from 9am-12noon)

Closed Saturday & Sunday at the farm

Monday, July 31 - 10am-6pm

Tuesday, August 1 - 10am-12noon and 7-9pm (also at the Crestview Hills Farmers Market 2-6pm)

Wednesday, August 2 - 9am-3pm

Thursday, August 3 - 10am-8pm

Friday, August 4 - 10am-8pm

Saturday, August 5 - 1-9pm (also at Schoolyard Winery Farmers Market from 9am-12noon)

*Free Radical Ranch*



A DIVERSIFIED FAMILY FARM



# KANIEMAE FIBER AND MORGAN FARMS

**1335 Bridgeport Benson Rd  
Frankfort, KY 40601**

**H:502-227-8130**

**C:502-229-1092**

**[Morganfarmsky.com](http://Morganfarmsky.com)**



## **Crawl Hours:**

Open 9-5  
each day of crawl

We raise Jacob and Shetland sheep. Products available will include whole fleece, small bags of washed and raw fleece, mill spun yarn, handspun yarn, roving, batts, rolags, small bags of dyed fleece for various projects, felted soap and dryer balls. Visitors will be able to meet some of the sheep. Also available handmade nostipines and shuttles.

Some GPS units direct visitors past our farm. Visitors should look for the large vegetable garden. A sign will be posted at the driveway.





# KENTUCKY WOOL WORKS

**290 Steele Ford Road  
Paris, KY 40361**

**859-707-0922**

**859-749-7594**

**kentuckywoolworks.com**

Stop by and visit the Kentucky Wool Works Pop-Up Shop located at Final Frontier Farm just outside Millersburg, KY. Fiber artisans will love our yarn, carded batts and dyed locks. Shop our imaginative and creative pet, people and home goods made from felted wool grown and shorn on our farms, featuring repurposed, reclaimed and/or vintage fabrics! While you're here meet the shepherds, tour the barn meet the Sheeple and watch Jess the Border Collie in action!

## **Crawl Hours:**

July 29th and 30th 10-4  
August 5th and 6th 10-4

Or by appointment during the week.  
Call 859-749-7594 or email  
kentuckywoolworks@hotmail.com

## **Needle Felted Sheep Class**

Hosted by: Kentucky Wool Works



**SATURDAY  
AUGUST 5TH  
9AM-12:30PM**

**\$45 includes  
all supplies**

**Mustard Seed Hill  
1122 Main St  
Millersburg, KY 40348**



email Julie at  
feltwithjulie@outlook.com

*Kentucky*  
**W O O L W O R K S**

Bluegrass Born. Sustainably Sourced. Locally Crafted.



# LAMBIKIN'S HIDEAWAY

**217 South B Street  
Hamilton, OH 45013  
513-895-5648**

**[lambikinshideaway.com](http://lambikinshideaway.com)**



## **Crawl Hours:**

Monday: 11 AM – 7 PM  
Tues, Thurs, Fri: 11 AM – 5 PM  
Wednesday: CLOSED  
Saturday: 10 AM – 5 PM  
Sunday: 12 PM – 5 PM

Lambikin's Hideaway is Cincinnati and Hamilton's premier yarn store. We offer our customers the best in customer service, fair prices, and the largest selection of yarn in the greater Cincinnati area. We currently have over 1600 skeins of hand-dyed fingering weight yarn.

Our building is a distinctive salmon-peachy color with convenient parking lot in the rear.





# LITTLE LOOMHOUSE

**328 Kenwood Hill Rd,  
Louisville, KY 40214  
[www.littleloomhouse.org](http://www.littleloomhouse.org)**

We are located in three historic cabins collectively known as the Little Loomhouse.

Tours and mini-weaving lessons with woven souvenirs are available during operation hours and must be scheduled on our website.

## **Crawl Hours:**

Tues – Fri 10am–3pm  
Sat 11am–4pm.

Parking is very limited. For your visit to the Little Loomhouse, we encourage you to wear comfortable closed-toe shoes, with a back, suitable for walking uphill over gravel surfaces.







# LSH CREATIONS

**1584 Wellesley Drive  
Lexington, KY 40513**

**859.321.7831**

**lshcreations.com**

Retailer of Ashford wheels, looms, carders, Strauch carders, Country Classics dyes, hand-dyed and natural yarn/fiber for spinning, weaving, knitting, books and magazines for spinning, weaving, knitting, dyeing, knitting needles, finished products (scarves/hats/rag rugs/kitchen towels), and pewter jewelry related to spinning, weaving and fiber animals.

## **Crawl Hours:**

July 28: 11-5

July 29: 11-5

July 30: 12-4

Aug 5: 11-5

Aug 6: 12-4

Other hours by appointment





# LAVENDER SPRINGS ALPACA

**158 L Conley Road, Oil  
Springs KY 41238  
606-297-2826**

**[lavenderspringsalpaca.com](http://lavenderspringsalpaca.com)**

Just minutes from the Country Highway museum and Paintsville Lake State Park and there are more wonderful attractions nearby.

## **Crawl Hours:**

August 5th 4-8 pm

We have a number of alpaca fiber products and textiles, honey from our apiary, handmade wood cutting boards and other products, beeswax melts and candles, lavender sachets, as well as many other decorative and handmade goods.





# MAIN STREET YARNS

**126 W Main Street  
Mason, Ohio, 45040  
(513) 204-0078**

**[mainstreetyarnsmason@gmail.com](mailto:mainstreetyarnsmason@gmail.com)**

Just minutes from the Country Highway museum and Paintsville Lake State Park and there are more wonderful attractions nearby.

## **Crawl Hours:**

July 28 friday 11-5  
29 sat 11-5  
30 sun closed  
31 mon 11-5  
Aug 1 tues 11-5  
2 wed 11-8  
3 thurs 11-5  
4 fri 11-5  
5 sat 11-5  
6 sun closed

We have a number of alpaca fiber products and textiles, honey from our apiary, handmade wood cutting boards and other products, beeswax melts and candles, lavender sachets, as well as many other decorative and handmade goods.



# MERRY- GO-ROUND FARM

**241 Lambert Road  
Berea, KY 40403  
606-308-4941**

 **Merry Go Round Farm**



## **Crawl Hours:**

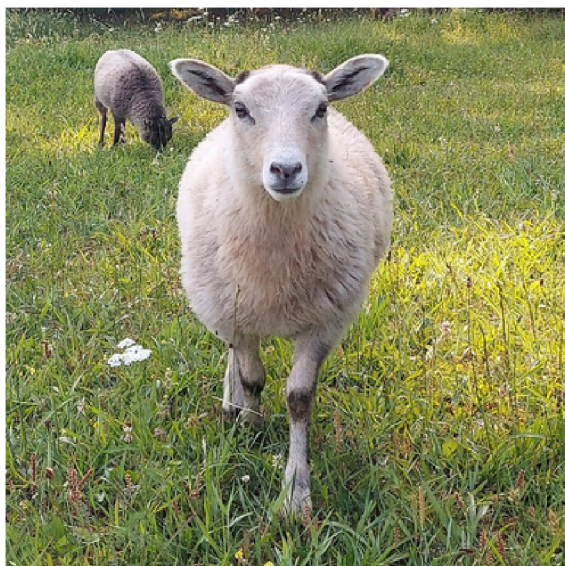
Fri, Sat, Sun July 28, 29, 30 10-5  
Wed Aug 2 10-5  
Fri, Sat, Sun Aug 4,5,6 10-5  
Also by appt Call 606-308-4941

Merry Go Round Farm is home to a flock of Shetland sheep, a herd of Angora goats, a couple of alpacas and an assortment of mixed breed goats. We offer for sale; natural and dyed Shetland roving, felted scarves and vessels, wool pendants, goat milk soap, and dryer balls.

GPS will get visitors close but will usually send one past our place. Turn off US 25 onto Lambert Road. Go under I 75. Our drive is the first driveway on the left. The farm is adjacent to the interstate.







# OAK HAVEN FIBER FARM

**3204 Old Sand Rd,  
Owingsville, KY 40360  
[oakhavenfiberfarm.com](http://oakhavenfiberfarm.com)**

## **Crawl Hours:**

Monday - Friday: 6-8pm

Saturday: 8am-1pm

(Location: Kentucky Market  
Pavilion also at I64 exit 123),  
1pm-8pm at farm address.

Sunday: 8am-6pm

CAGBA registered Colored Angora  
Goats, NASSA registered Shetland  
Sheep, Mohair, Wool, Yarn, and  
handmade hats, scarves, and other  
items.





# OVER THE NEXT ROW KNITS

**6301 Moonseed St,  
Prospect, KY 40059  
[overthenextrowknits.com](http://overthenextrowknits.com)**

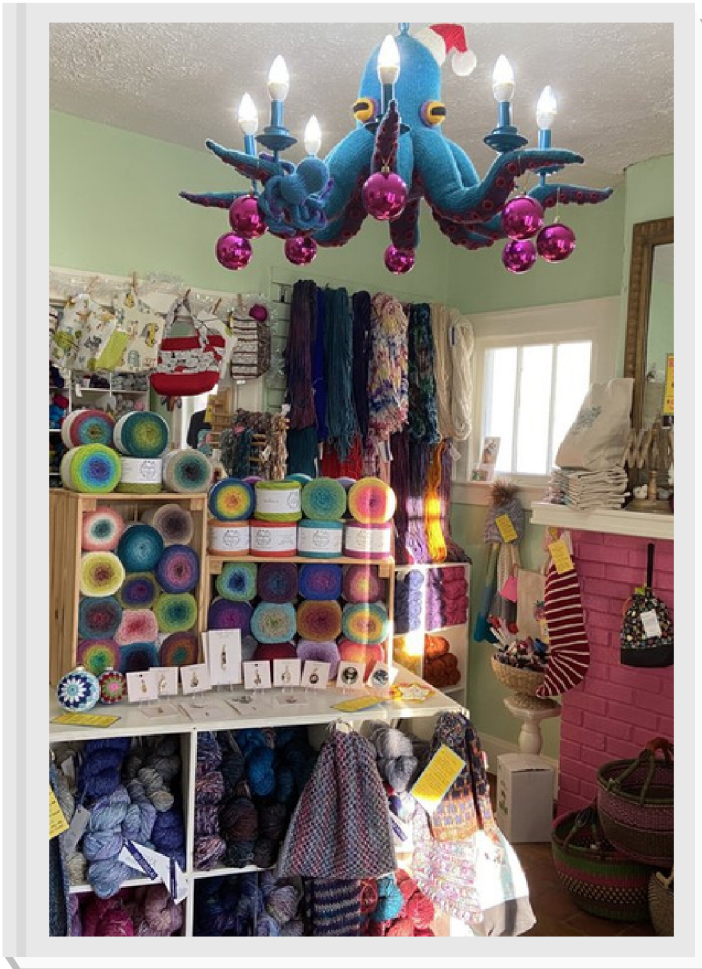
## **Crawl Hours:**

Sun - 11-4  
Mon - CLOSED  
Tue - 9-1  
Wed 11-4  
Thurs- 3-7  
Fri - 3-7  
Sat - 11-6

Over the Next Row Knits opened in late January 2023 in Northeast Louisville, KY. We are thrilled to be in this incredible world of all things fiber arts. When you visit our store, you can expect an on trend selection of yarns. We value our sourcing and our impact, both environmentally and socially. We carry some wonderful indie dyers, and some well known favorites. Please check our website for current brands. We also offer online sales. We share our retail space with The Minted Monogram, so you'll find some ready to gift items as well.

We are located in the North Village Market of Norton Commons. "America's largest small town". Home to the most businesses, retail stores, restaurants, etc in one retail designated area in the state. So, plan your day accordingly, you will want to stay awhile! We can't wait to see you and discover what's over your next row!





## **Crawl Hours:**

Tues-Fri: 11am-5pm  
Saturday: 10am-4pm  
Sunday: 12pm-4pm

# **REBELLE**

**225 Rosemont Garden,  
Lexington, KY 40503  
859-389-9750  
[rebellegirls.com](http://rebellegirls.com)**

ReBelle is Lexington's color playground featuring a large variety of eye-catching colorways, fun projects, and a resident octopus to give you knit-spiration for years to come. We focus our inventory on striking fibers including Madeline Tosh, Knitted Witt, and Emma's Yarns. There will be giveaways and a Purlsmith trunk show throughout the duration of the crawl. Come to our Imagination Station!. We are offering fun filled conversations, dreamy color combinations, and projects that will keep you knitting all year long. We can't wait to see you!



# RECLAIMED RANCH

**5953 Hogg Ridge Road  
Williamstown, KY 41097  
(414)852-2489  
[reclaimedranchky.com](http://reclaimedranchky.com)**



## Crawl Hours:

Daily 10am to 5pm



We are a small family operated farm that focuses on rescued fiber animals. Currently on our farm we have alpacas, llamas, a llapaca and angora rabbits. We have a luxurious blend of alpaca and angora yarn for the knitters and crocheters. For the spinners we have some raw fibers available. Come have some fun at our blending bar with washed and picked fibers! If your looking for a fast and easy project anyone can do check out our felting kits. We welcome all visitors to interact with our fluffy animals, tour the farm or have a picnic while your here.

Directions: look for the Reclaimed Ranch sign and at the driveway (gps will take you to our hay field)





# SARABEE DESIGNS & FIBER FARM

**6950 Mt. Sterling Rd  
Winchester, KY 40391**

**859-771-7442**

**[sarabeedesigns.com](http://sarabeedesigns.com)**

A family fiber farm in Clark County, Kentucky. Yarns and fiber fresh off the shetland, babydoll, rambouillet and longwool sheep on the farm!

Come and see the sheep, shop the fiber, finished items and more!

Located right off the 101 exit of I-64!

## **Crawl Hours:**

August 2nd-August 6  
11-6

*Sarabee*  
**DESIGNS**  
&  
**FIBER FARM**  
**[SARABEEDESIGNS.COM](http://SARABEEDESIGNS.COM)**

# STITCH YARN STUDIO

**701 Scott St  
Covington, KY 41011  
859-431-9276**

**[stitchyarnstudio.com](http://stitchyarnstudio.com)**

Stitch Yarn Studio is Northern Kentucky & Cincinnati's "happy landing place" for knitters, crocheters, and fiber lovers.

Located at 701 Scott Street in the heart of historic Covington, KY, the Studio is a Rowan Flagship Store, plus selling a broad range of yarns from both independent and commercial fiber producers, notions, books, and our own line of speciality teas. During the yarn crawl, we will have special gifts for Bluegrass Yarn & Fiber Crawl visitors, trunk shows, special promotions, and longer operating hours.

Metered parking when shopping at Stitch Yarn Studio is plentiful on either 7th Street or Scott St. (We're located on the corner.) The Hotel Covington Parking garage is located just across 7th street and we can offer parking validation for your first hour of parking in the garage - or at a meter (if you give us your parking meter number when you enter the store.)



## **Crawl Hours:**

Tues, Wed & Fri 11 - 4  
Thurs 11 - 8  
Sat 10 - 4  
Sun & Mon -  
CLOSED

## Stitch Yarn Studio



A happy landing place for knitters, crocheters, & fiber lovers





# SWEET HOME SPUN

**6805 Castle Hwy  
Pleasureville, KY 40057**

**502-750-1398**

**sweethomespuncom**

Sweet Home Spun is a knitting and spinning studio located in the historic Low Dutch Meetinghouse on a working sheep farm in Henry County. Our flock of Blue Faced Leicester crosses provides wool that is a delight for fiber enthusiasts. We offer single farm fleece, roving and yarn from our sheep. Knitters and spinners love the natural colored fleeces and unique hand dyed yarns. Sweet Home Spun also features hand knit hats and mittens and a wide variety of hand dyed, hand made socks. Visit us during the yarn crawl for demonstrations and exclusive deals on new and gently used fiber equipment. Refreshments will be served and you won't want to miss a visit with the sheep!

## **Crawl Hours:**

August 4-7  
10:00am - 6:00pm



We are 1.2 miles south of the stop light (there is only one!) in Pleasureville. Sweet Home Spun is on the right.

If you are following GPS, DO NOT turn on MaGruder Lane. The GPS will self correct and you will have a much easier drive, arriving just as quickly.



# VIOLET HILL FARM

**4129 Willow Ln.  
Lexington, KY 40516  
360-600-6292  
[violethillalpacas.com](http://violethillalpacas.com)**

## **Crawl Hours:**

Contact Location for  
Crawl Hours

Violet Hill Farm is located north on I-64 off KY 859 (Haley Rd.). Head north on Haley Rd., turn right on Willow Lane and the farm is located almost at the end of the lane. Parking is limited by available on front lawn area.

Violet Hill Farm is a producer of fine, natural colored and white merino sheep – the only in state of Kentucky!

Additionally, the farm produces fine huacaya alpaca fleeces. I offer education, hands on mentoring, tours for families and small groups as well as products made from these wonderful animals including raw fleeces for spinners and artisans, rovings, rug yarn, yarn for knitters and crocheters, felting kits, textiles, garments and other miscellaneous, wonderful things for almost everyone! Animals are raised here predominantly for fiber but are also available for purchase as fiber producing animals, breeding animals and pets. Maybe one is waiting to go home with you!

Come watch demonstrations on fiber skirting and preparation, fiber spinning, dyeing and felting; meet a few of the young alpacas and few of the friendlier older ones as well. Learn about the earth friendly benefits of climate smart farming.





# WHISPERING BIRCH FARM

**223 Hughley Ln  
Harrodsburg, KY 40330  
(859) 368-3890**

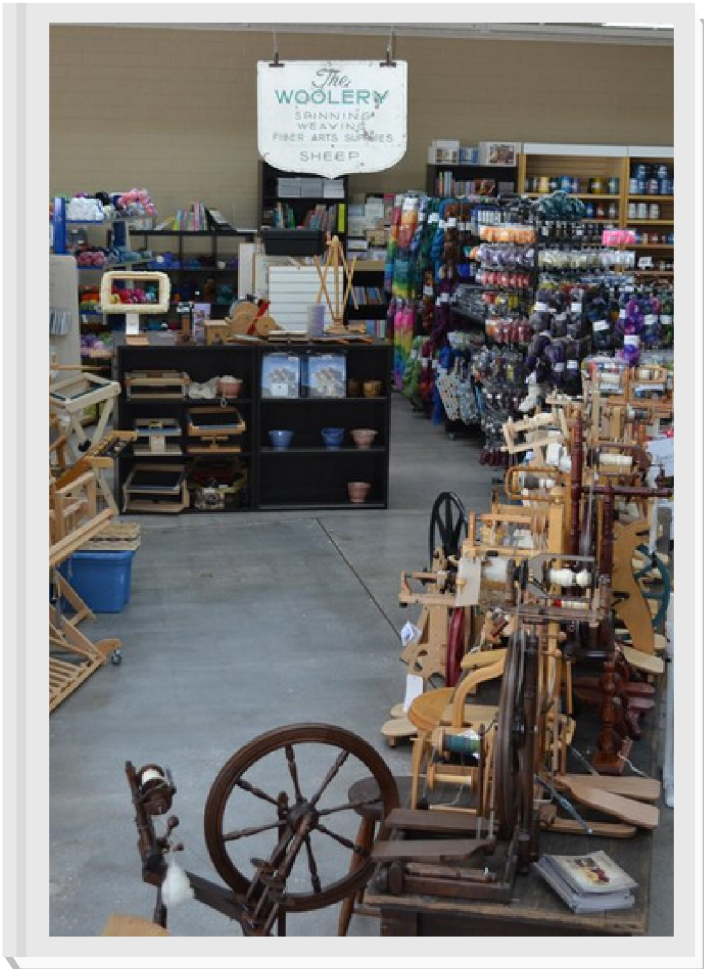
**WhisperingBirchFarm.com**



## Crawl Hours:

July 28	12-5
July 29	12-5
July 30	12-5
July 31	12-5
Aug 3	12-5
Aug 4	12-5
Aug 5	12-5
Aug 6	12-5

Whispering Birch Farm & Fiber is located between Shaker Village and Danville, Ky just off of 33S at 223 Hughley Ln, Harrodsburg, KY. There will be a sign and balloons near our driveway. You will be able to see the animals and we will be happy to answer questions about them. The 'Wool Shop' will be open and filled with handspun & hand dyed yarns, art yarns, art batts, dyed Merino rovings, wool from our sheep, Angora goats and Angora rabbits, and many other value added products. If you have any questions, please text me at 8593683890 or email at [thefiberqueen@gmail.com](mailto:thefiberqueen@gmail.com). Please check out our farm page at [www.facebook.com/whisperingbirchfarm](https://www.facebook.com/whisperingbirchfarm). Can't wait to see you!"



# THE WOOLERY

**859 E Main St,  
Frankfort, KY 40601  
[www.woolery.com](http://www.woolery.com)**

Crawl Hours:

July 28th, 10am – 5pm  
August 4, 10am – 5pm

The Woolery serves as your destination for all things weaving, spinning, knitting, crochet, felting, punch needle, and more! We are proud to be a family-owned small business for over 40 years, and look forward to supplying the tools and supplies for the fiber art community – local and worldwide – for years to come.

